



## REGIONAL SPECIALISED METEOROLOGICAL CENTRE-TROPICAL CYCLONES, NEW DELHI TROPICAL WEATHER OUTLOOK

DEMS-RSMC TROPICAL CYCLONES NEW DELHI DATED 17.05.2025

**TROPICAL WEATHER OUTLOOK FOR THE NORTH INDIAN OCEAN (THE BAY OF BENGAL AND THE ARABIAN SEA) VALID FOR THE NEXT 168 HOURS ISSUED AT 0730 UTC OF 17.05.2025 BASED ON 0300 UTC OF 17.05.2025.**

### BAY OF BENGAL:

Yesterday's upper air cyclonic circulation over southeast Bay of Bengal persisted over the same region between 1.5 & 5.8 km above mean sea level tilting southwestwards with height at 0300 UTC of today, 17<sup>th</sup> May, 2025.

A trough runs from the above cyclonic circulation over southeast Bay of Bengal to central Coastal Andhra Pradesh & Yanam between 1.5 & 5.8 km above mean sea level tilting southwestwards with height at 0300 UTC of today, 17<sup>th</sup> May, 2025.

Yesterday's upper air cyclonic circulation over west central Bay of Bengal and adjoining north Coastal Andhra Pradesh at 1.5 km above mean sea level merged with above trough at 0300 UTC of today, 17<sup>th</sup> May, 2025.

Scattered to broken low and medium clouds with embedded intense to very intense convection lay over southwest Bay of Bengal, Tamil Nadu coast and central & rest south Bay of Bengal, Andaman Sea, Gulf of Martaban. Scattered low and medium clouds with embedded moderate to intense convection lay over Northeast Bay of Bengal.

### \*PROBABILITY OF CYCLOGENESIS (FORMATION OF DEPRESSION) DURING NEXT 168 HRS:

24 HOURS	24-48 HOURS	48-72 HOURS	72-96 HOURS	96-120 HOURS	120-144 HOURS	144-168 HOURS
NIL	NIL	NIL	NIL	NIL	NIL	NIL

\*NOTE: EVERY 24HR FORECAST IS VALID UPTO 0300 UTC (0830 IST) OF NEXT DAY

### ARABIAN SEA:

An upper air cyclonic circulation is likely to form over eastcentral Arabian Sea off Karnataka coast around 21<sup>st</sup> May. Under its influence, a low pressure area is likely to form over the same region around 22<sup>nd</sup> May. Thereafter, it is likely to move northwards and intensity further.

Scattered low and medium clouds with embedded isolated moderate to intense convection lay over eastcentral & southeast Arabian Sea off Maharashtra, Goa, Karnataka and Kerala coasts, Lakshadweep island area & Comorin area and westcentral & southwest Arabian Sea.

### \*PROBABILITY OF CYCLOGENESIS (FORMATION OF DEPRESSION) DURING NEXT 168 HRS:

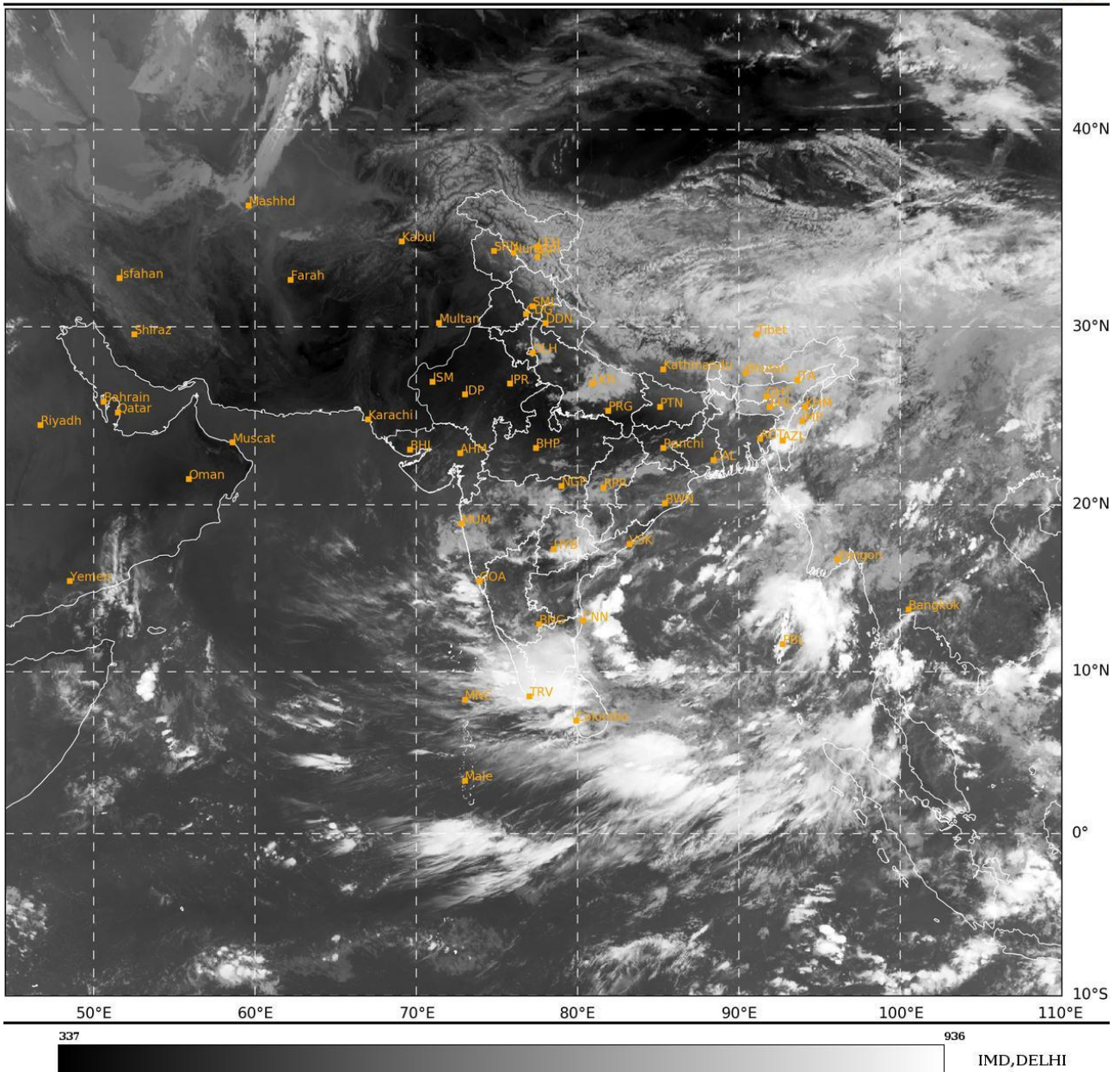
24 HOURS	24-48 HOURS	48-72 HOURS	72-96 HOURS	96-120 HOURS	120-144 HOURS	144-168 HOURS
NIL	NIL	NIL	NIL	NIL	LOW	MOD

\*NOTE: EVERY 24HR FORECAST IS VALID UPTO 0300 UTC (0830 IST) OF NEXT DAY

## REMARKS: NIL

SAT : INSAT-3DR IMG  
IMG\_TIR1 10.8 um  
L1C Mercator

17-05-2025/(0345 to 0412) GMT  
17-05-2025/(0915 to 0942) IST



Cloud distribution: (a) Isolated: <25%, Scattered:25-50%, Broken: 51-75%, Solid:>75%, Convection Intensity: (a) Weak: Cloud Top Temperature(CTT)>-25°C,(b)Moderate:CTT:-25°Cto-40°C,(c)Intense:CTT: -41°Cto -70°Cand(d)Very Intense::Less than -70°C  
PROBABILITYOFCYCLOGENESIS(FORMATIONOFDEPRESSION):NIL:0%,LOW:1-33%,MODERATE:34-66%ANDHIGH:67-100%  
ThisisaguidanceBulletinforWMO/ESCAPPanelMembercountries.VisitrespectiveNationalwebsitesforCountryspecificBulletins